

# QFT with Hadrons

## Introduction to B Physics

### **1. Leptonic Decays of Hadrons: from $\pi \rightarrow \ell \nu$ to $B \rightarrow \ell \nu$**

*QFT in Hadron Decays. Decay Constants. Helicity Suppression in the SM.*

### **→ 2. On the Structure and Unitarity of the CKM Matrix**

*The CKM Matrix. The GIM Mechanism. The Unitarity Triangle.*

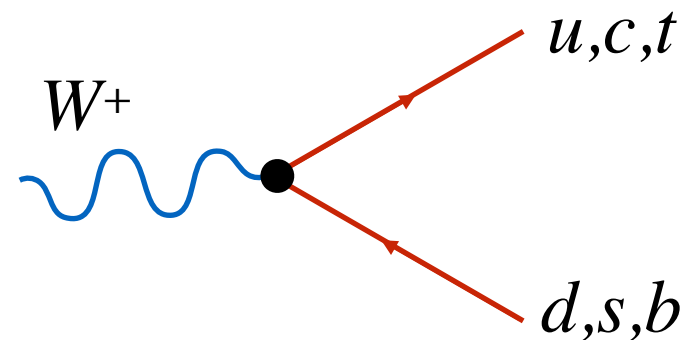
### **3. Semi-Leptonic Decays and the “Flavour Anomalies”**

*$B \rightarrow D^{(*)} \ell \nu$ . The Spectator Model. Form Factors. Heavy Quark Symmetry.*

*$B \rightarrow K^{(*)} \ell^+ \ell^-$ . FCNC. Aspects beyond tree level. Penguins. The OPE.*

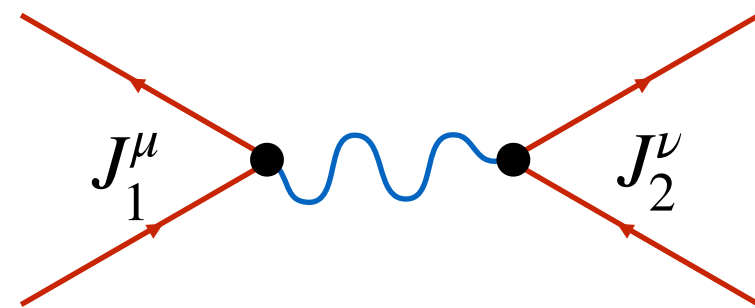
# Recap: Charged-Current Processes at Low Energies

Consider  $W$  interactions with quarks (“charged current”)



For now, assume free quarks, for simplicity  
(will reintroduce effects of confinement later.)

Generic amplitude for  $W$  exchange between two **fermion currents**,  $J_1, J_2$ :



$$\mathcal{M} = \frac{4G_F}{\sqrt{2}} J_1^\mu J_{2\mu}^\dagger$$

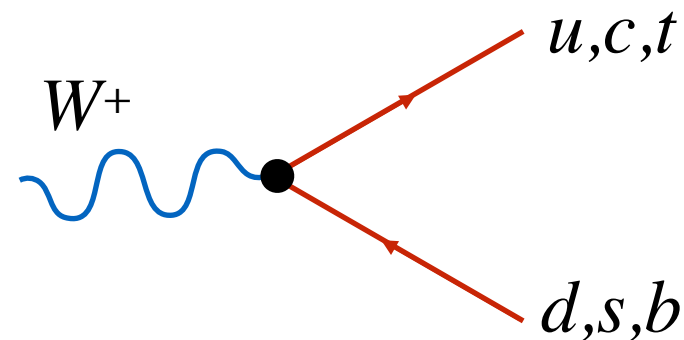
Question: What assumption has been made about  $q_W^2$  here?

with  $J_{\text{quark}}^\mu = (\bar{u}, \bar{c}, \bar{t}) \gamma^\mu \frac{1}{2} (1 - \gamma_5) U \begin{pmatrix} d \\ s \\ b \end{pmatrix}$

Unitary matrix  $\curvearrowright$

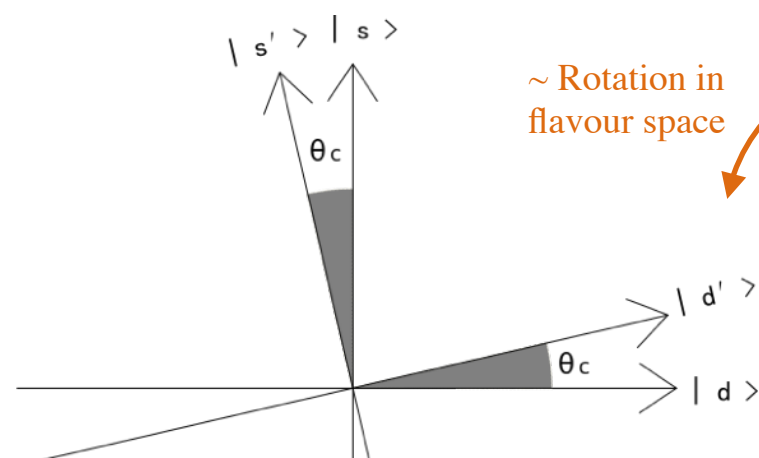
# Recap: Charged-Current Processes at Low Energies

Consider  $W$  interactions with quarks (“charged current”)



For now, assume free quarks, for simplicity  
(will reintroduce effects of confinement later.)

with  $J_{\text{quark}}^\mu = (\bar{u}, \bar{c}, \bar{t}) \gamma^\mu \frac{1}{2} (1 - \gamma_5) U \begin{pmatrix} d \\ s \\ b \end{pmatrix}$



~ Rotation in flavour space

Unitary matrix

$SU(2)_L$  Weak-interaction (“current”) eigenstates slightly **rotated** relative to Hamiltonian (“mass”) eigenstates

Historical example: first two generations:

$$\begin{bmatrix} d' \\ s' \end{bmatrix} = \begin{bmatrix} \cos \theta_c & \sin \theta_c \\ -\sin \theta_c & \cos \theta_c \end{bmatrix} \begin{bmatrix} d \\ s \end{bmatrix},$$

with “Cabibbo Angle”  $\theta_C \sim 13^\circ$

➤  $\sin \theta_C \sim 0.23$

$$\sum_i \bar{d}'_i d'_i = \sum_j \bar{d}_j d_j \quad (\text{due to unitarity})$$

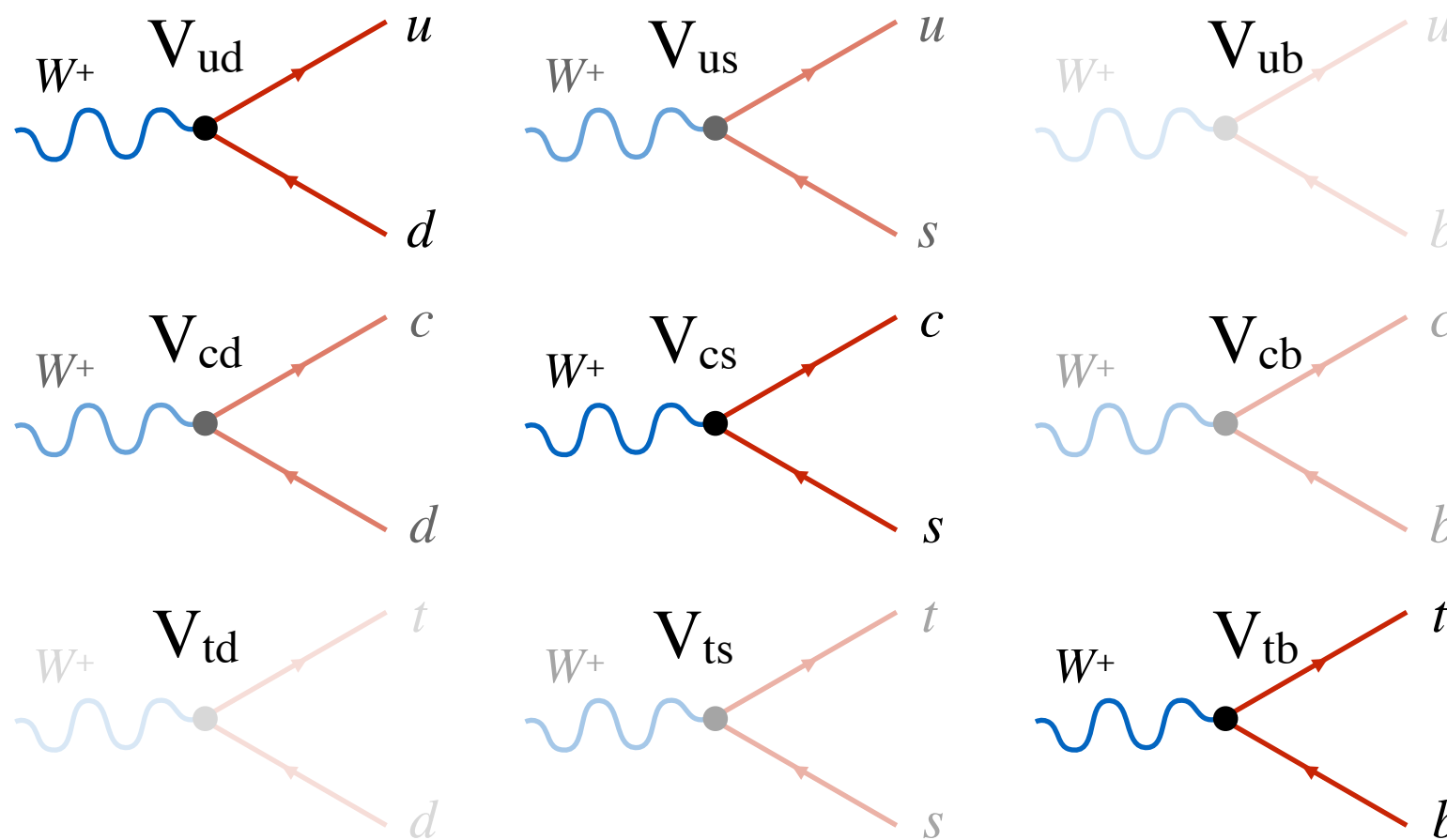
(same for leptons\*, with  $U = 1$ )

\*Note I use the word **lepton** to refer collectively to charged leptons + neutrinos

# Recap: The CKM Matrix

“Wolfenstein parametrisation”, to  $\mathcal{O}(\lambda^2)$

$$U = \begin{pmatrix} V_{ud} & V_{us} & V_{ub} \\ V_{cd} & V_{cs} & V_{cb} \\ V_{td} & V_{ts} & V_{tb} \end{pmatrix} = \begin{pmatrix} \boxed{1 - \frac{1}{2}\lambda^2} & \boxed{\lambda} & \mathcal{O}(\lambda^3) \\ \boxed{-\lambda} & \boxed{1 - \frac{1}{2}\lambda^2} & \boxed{A\lambda^2} \\ \mathcal{O}(\lambda^3) & \boxed{-A\lambda^2} & \boxed{1} \end{pmatrix} + \mathcal{O}(\lambda^4)$$



$$\lambda \sim \sin \theta_C$$

$$\sim 0.23$$

$$A \sim 0.81$$

+ two more parameters ( $\rho, \eta$ ),  
to specify complex  $V_{ub}, V_{td}$

**Note:** there are other parametrisations, such as the “PDG” parametrisation: same numerical values of  $V_{ij}$ , cast in terms of a 3 rotation angles and a phase instead of  $(\lambda, A, \rho, \eta)$

# The CKM elements in Physical Processes

(Note that most of these processes are charged-current **semileptonic** decays)

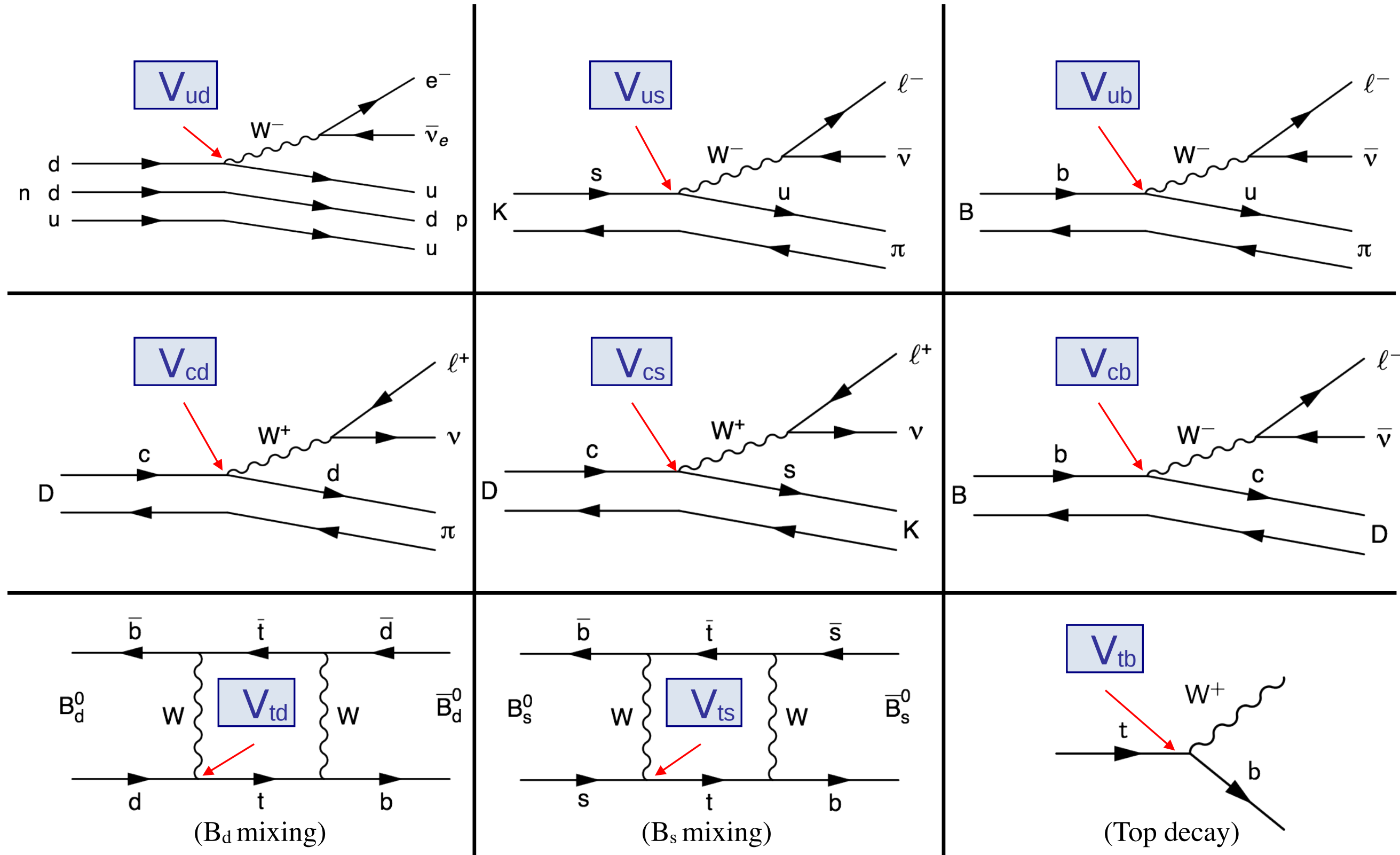


Illustration by M. Bona

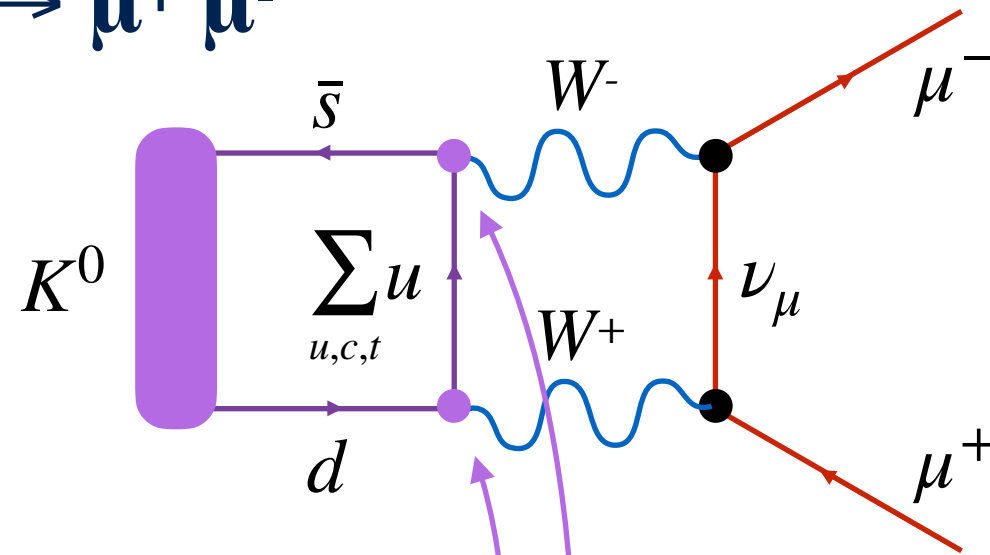


# Consequences of CKM Unitarity 1: The GIM Mechanism

S.L. Glashow, J. Iliopoulos and L. Maiani, Phys. Rev. D2 (1970) 1285.

Off-diagonal CKM terms imply amplitudes for processes like:

$$K^0 \rightarrow \mu^+ \mu^-$$



Expect  $M \propto G_F V_{us} \sim G_F \sin\theta_C$

Observed to be much more strongly suppressed (BR $\sim 10^{-8}$ )

*Historical Note: the absence of the processes discussed on this slide led GIM to predict the existence of the charm quark!*

Unitarity: 
$$\sum_j V_{ij} V_{jk}^* = \delta_{ik}$$

(Summed amplitude small but non-zero because  $m_c \neq m_u$ )

E.g.,: 
$$V_{ud} V_{us}^* + V_{cd} V_{cs}^* \sim \cos\theta_C \sin\theta_C - \sin\theta_C \cos\theta_C = 0$$

Also: 
$$\left\{ \begin{array}{l} K^+ (u\bar{s}) \rightarrow \pi^+ e^+ e^- \\ K^+ (u\bar{s}) \rightarrow \pi^+ \nu\bar{\nu} \end{array} \right.$$

**Exercise problem E4:** draw diagrams analogous to the one above for these two processes and show how the GIM mechanism is at work in them.

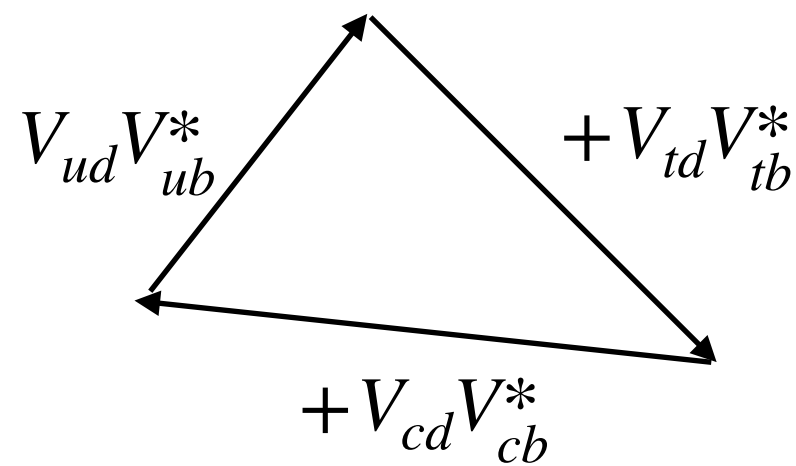
*Hint: One of the incoming quarks is a "spectator"*

# Consequences of CKM Unitarity 2: The Unitarity Triangle(s)

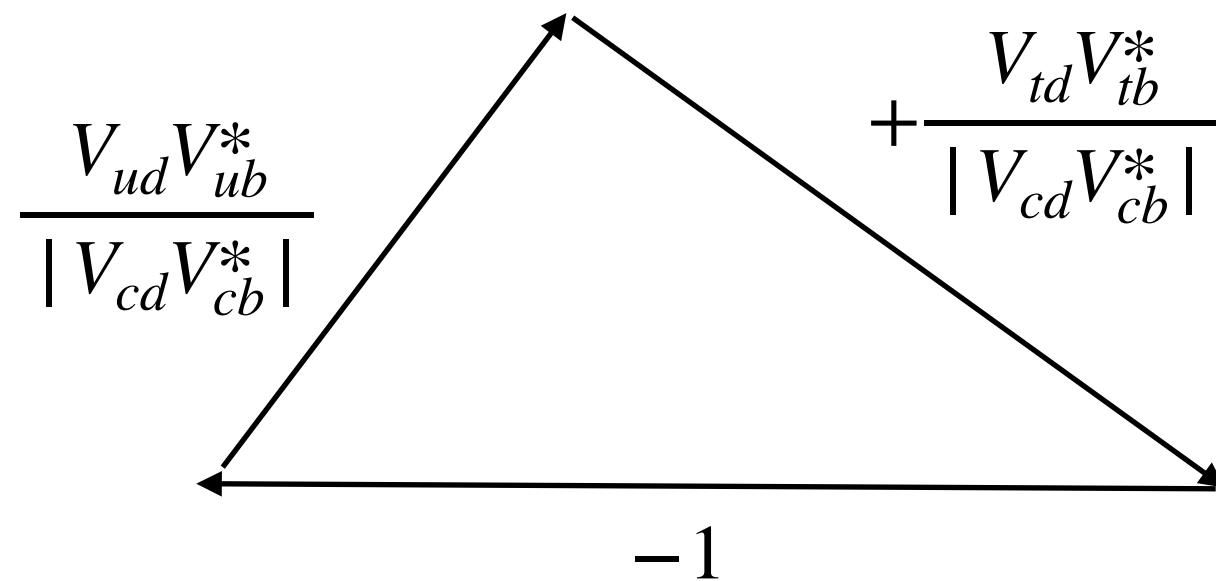
**Write the unitarity constraints explicitly:**

$$\sum_j V_{ij} V_{jk}^* = \delta_{ik} \quad \text{e.g.} \quad V_{ud} V_{ub}^* + V_{cd} V_{cb}^* + V_{td} V_{tb}^* = 0$$

Sum of three complex numbers = 0

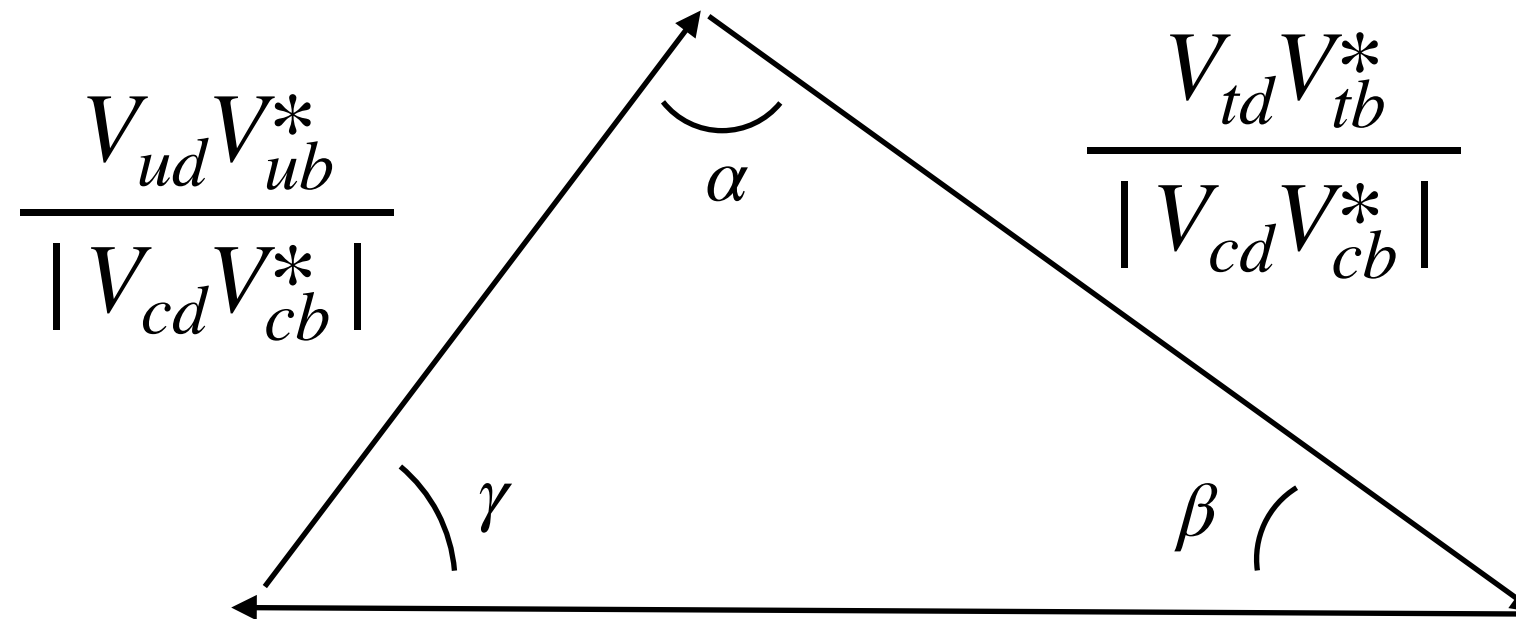


Normalise by  $|V_{cd} V_{cb}^*|$ :



# Recap: The Unitarity Triangle\*

This is called “the unitarity triangle”



**Exercise problem E5:** show mathematically why CPV is only observable in processes with at least two interfering amplitudes with different relative CKM phases.

Note: complex phases  $\Rightarrow$  **CP Violation** (Note: requires **interfering** amplitudes)

➤ Measurements of CPV processes constrain relative phases.

$$\alpha = \arg[-V_{td}V_{tb}^*/V_{ud}V_{ub}^*] = \phi_2$$

$$\beta = \arg[-V_{cd}V_{cb}^*/V_{td}V_{tb}^*] = \phi_1$$

$$\gamma = \arg[-V_{ud}V_{ub}^*/V_{cd}V_{cb}^*] = \phi_3$$

Different **weak processes** probe different combinations of the CKM elements  $\rightarrow$  constrain different sides or angles in the triangle.

**Measure many processes**  
 $\rightarrow$  **Overconstrain the triangle = Test SM**

(\*In principle, each unitarity constraint has its own “triangle” - this is the standard one.)

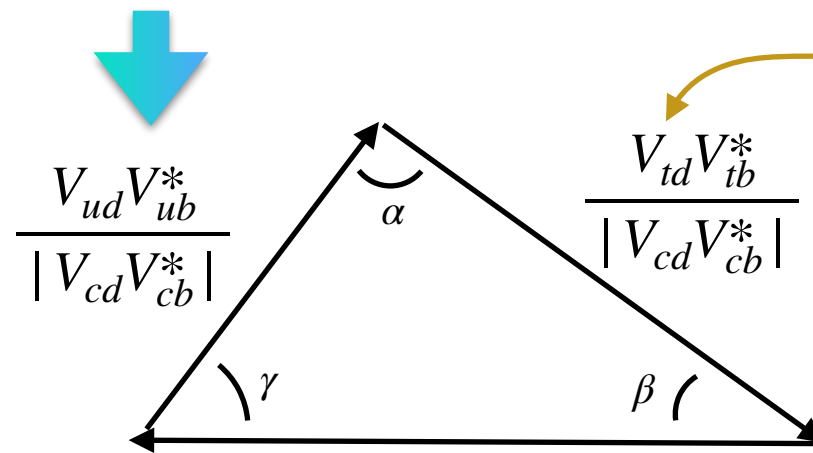


# Constraints on the CKM Triangle

**Example: “Our” process,  $B \rightarrow \tau \nu$ , is proportional to  $|V_{ub}|^2$ :**

First measured by Belle in 2012

<https://arxiv.org/abs/1208.4678>

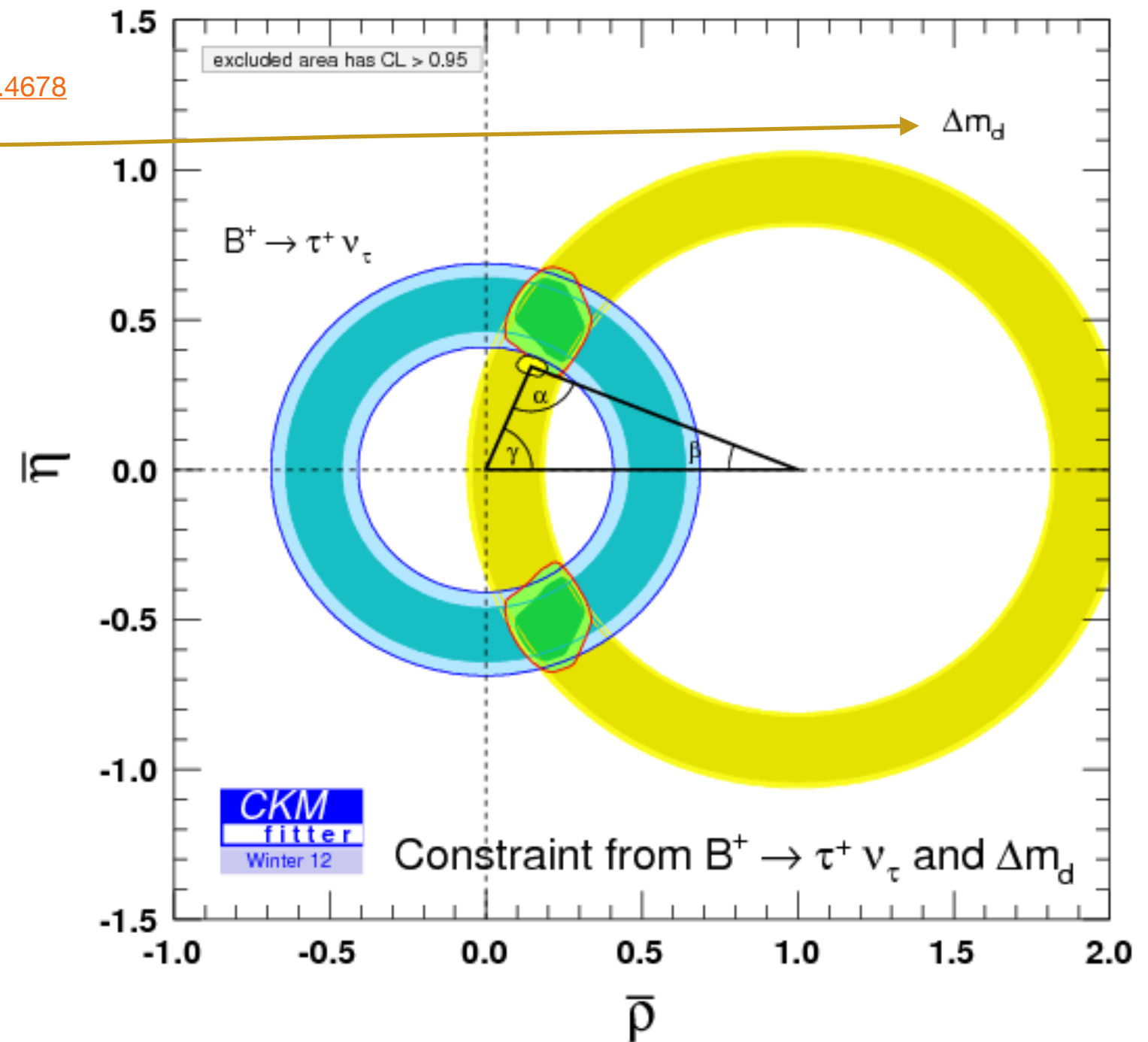


The first determination of  $V_{ub}$  from  $B \rightarrow \tau \nu$  (combined with  $V_{td}$  from  $\Delta m_d$ )

➤ Green area(s)

Seemed to be in slight tension with other existing constraints

➤ (the little yellow area)

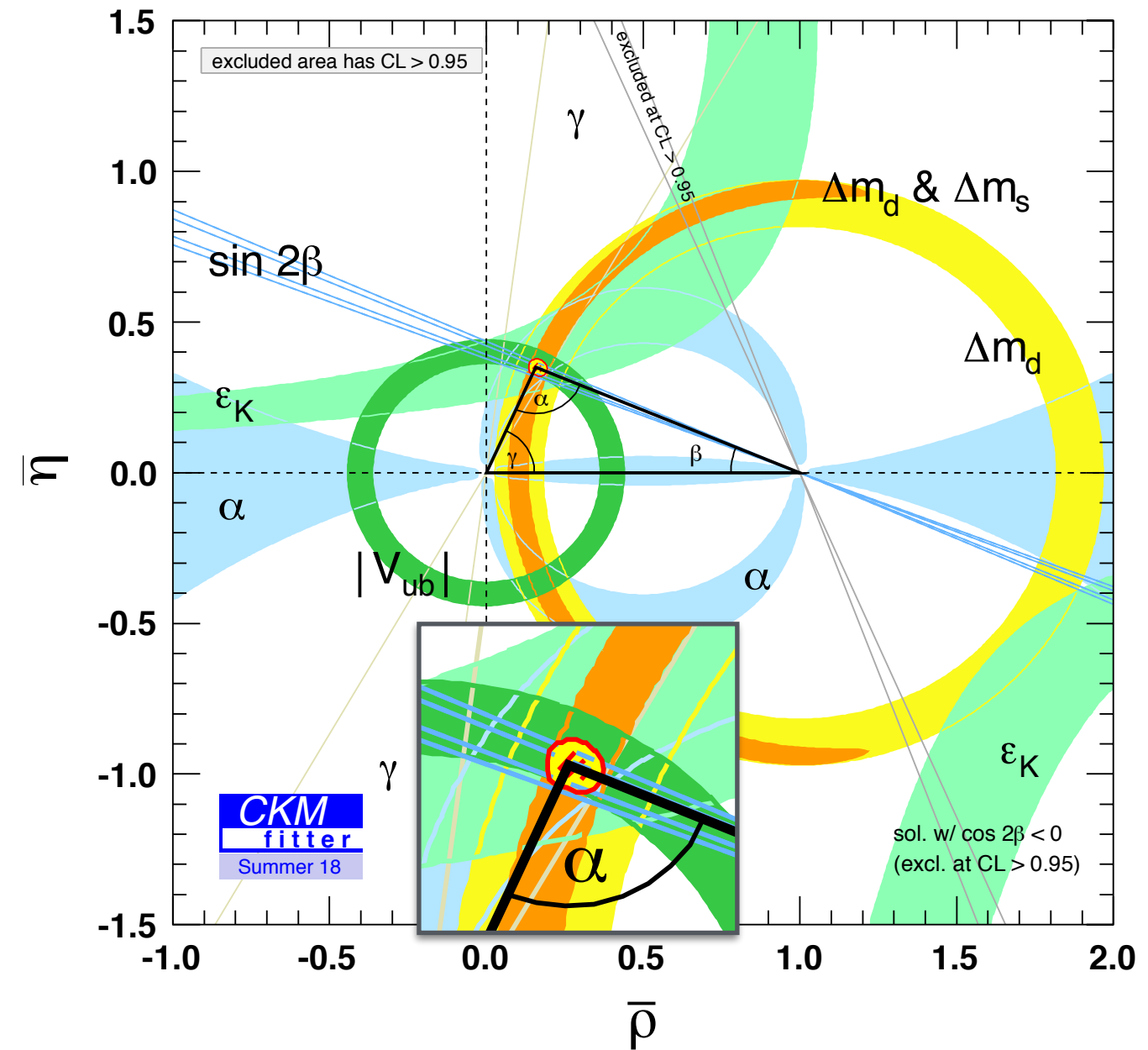
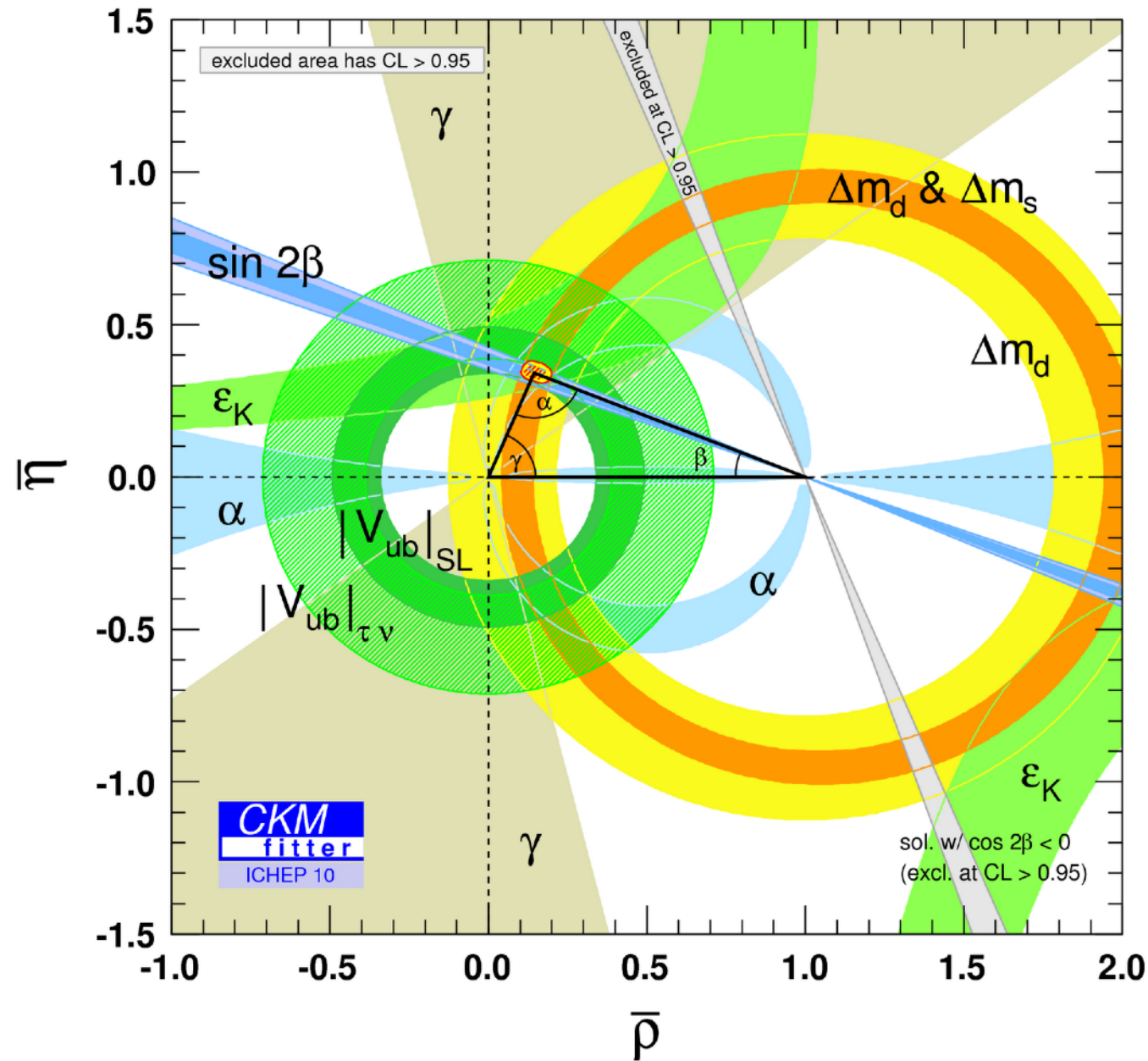


# The Current Picture

Before (2010)



Now (2018)



Conclusion (for now):

All determinations of coordinates of top corner  $(\bar{\rho}, \bar{\eta})$  self-consistent at this level.

# Why keep going?

**The triangle *has to break*, at some point...**

For 2023, explain the Sakharov conditions

+ maybe general considerations: new physics easily introduces new phase(s)

# Summary of Problems and Exercises for Self Study

**E4. Draw diagrams for processes on p.6; explain their GIM suppression**

**E5. Show why CPV is only physically observable in processes with at least two interfering amplitudes with different CKM phases.**

**E6. Draw LO Feynman diagrams for (1)  $D^0 \rightarrow K^+\pi^-$  and (2)  $D^0 \rightarrow K^-\pi^+$ , and explain the observation that  $\Gamma_{(1)} / \Gamma_{(2)} \sim 4 \times 10^{-3}$ .**

You will present your progress on these in the next lesson and we will discuss any questions / issues you encounter.

**Assignment Problems 1&2 : the B physics research problems**

---



# An example of a recent conundrum

## Discrepancies between **inclusive** and **exclusive** determinations of $V_{cb}$ and $V_{ub}$

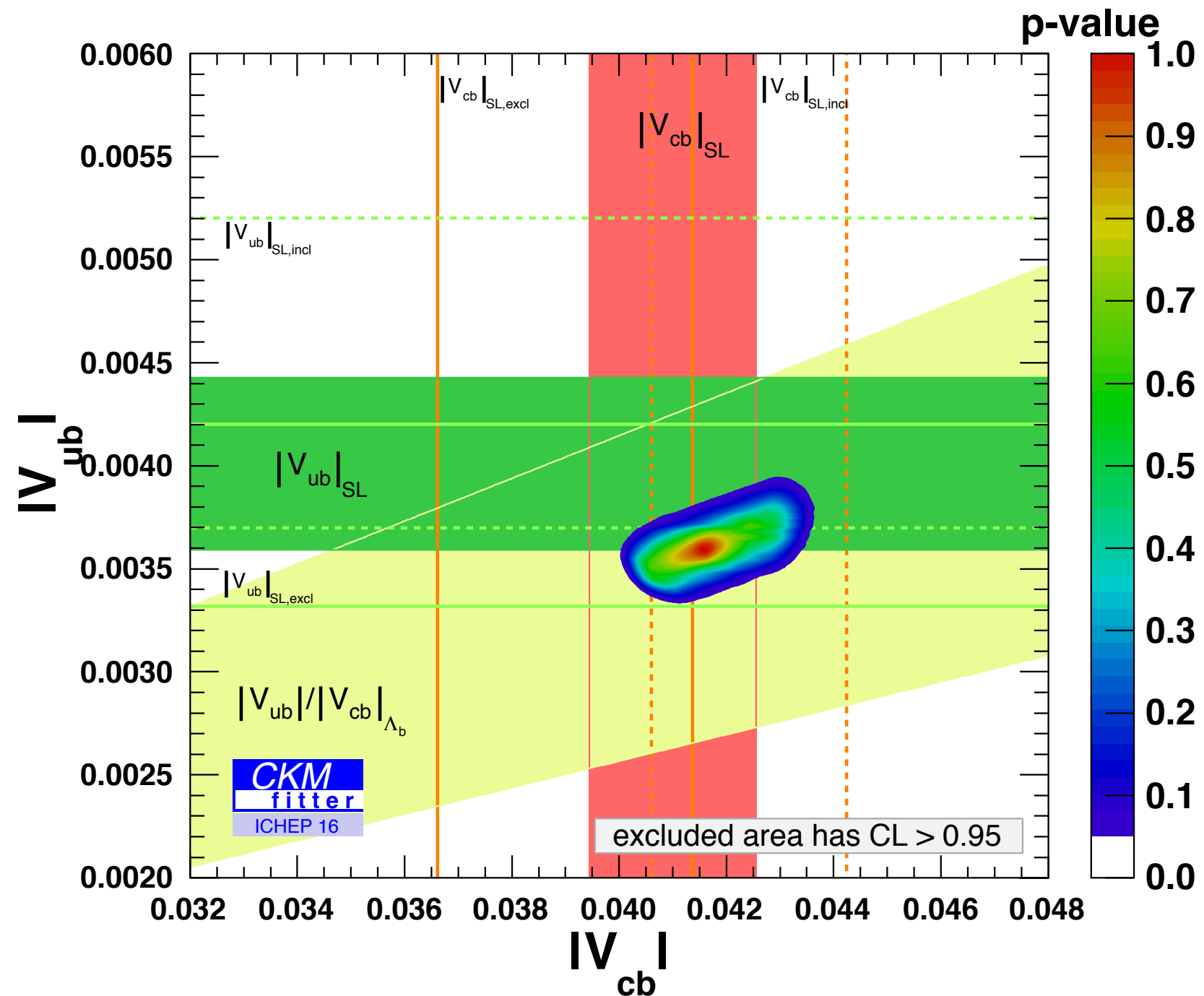
*Examples:*

**Exclusive:**  $B \rightarrow \pi \ell \nu$

Exclusive means one specific decay mode

**Inclusive:**  $B \rightarrow X_u \ell \nu$

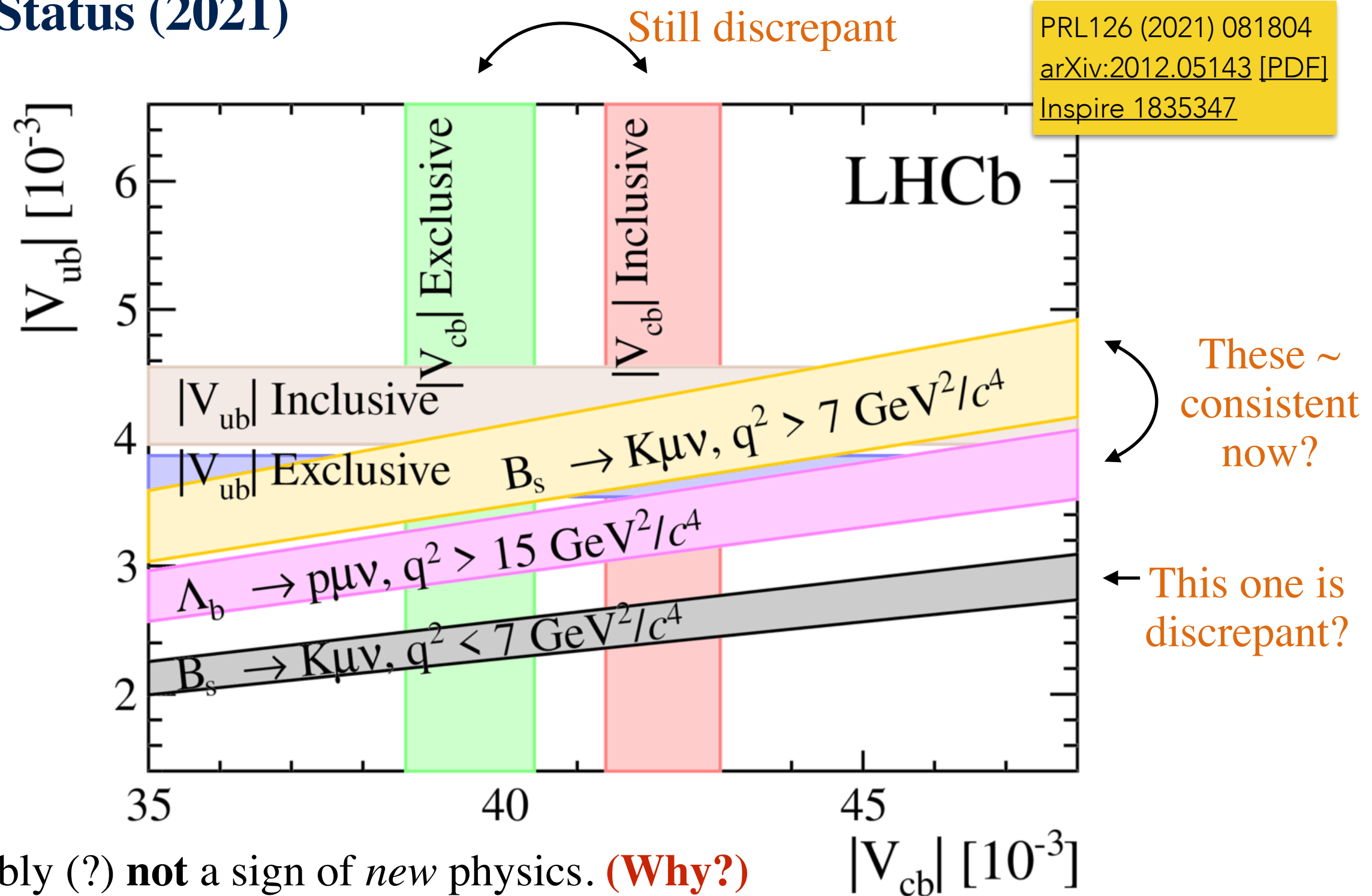
Inclusive means sum over any and all modes that involve a  $b \rightarrow u$  transition





# An example of a recent conundrum

## Current Status (2021)



Probably (?) **not** a sign of *new* physics. **(Why?)**

Still important to understand what is going on (since otherwise  $\blacktriangleright$  large uncertainties!)